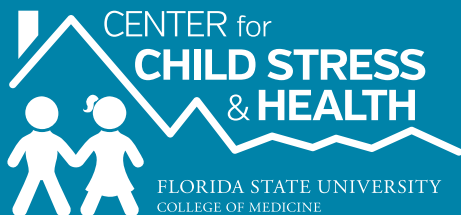


AYA TATB'AJ
te tnejel

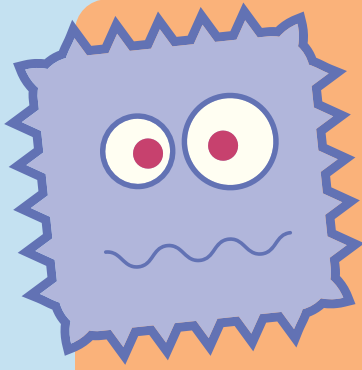
#1

KAYB'IL

tij k'wal kye noq tichaqko
toj kychwinqel kuxen.



www.FSUstress.org



B'is ti'j noq ti

Atzin yab'il n-ok kyij k'wal tzenku nb'aj noq tichaqko toj kychwinqel tzenko k'walqe, ja tzin kypontz te tij xjal n-ok kyyab'il tzenko; yab'il tij kyanme, mi jatz kyxew, noq b'isqeq.. ex ntzaj kyq'on nya b'an tzenko lu'n.

- Nkub' kypan kyib' tuk'e kymuj.
- Nti kywaq
- Ma kyin jun kyuk'e
- Moqa at jun kyuk'e toj cars.



Kwest jotxjo ma b'aj nq'man mektzin aj jun tb'anel tqanel tu'n mi chi yab'te qk'wal tu' yab'il qe. Awo tatb'ajqo minx qoken tu'n qkayin kyij qk'wal.

Kux Yolin tijo nb'aj toj tchwinqila

Kux yolin kyuk'e k'wal tij noq ti o b'aj tok tchwinqila tu'n tel kynik' k'wal tij.



Kayinka jotx amb'il

Il tij tu'n tten nim amb'il kyuk'e k'wal, q'inqixa chaqil moqa saqchb'il, q'inqixa wal moqa kux chi wan junx.

Mi kub' tb'inchin tjunalxa

Kayinka qa atx txqantl k'wal moqa tfamila, at kyuk'e k'wal a b'an kynab'l ex n-el kynik' tij.

Qanixa jun tumel

Qanixa jun tumel kye xnaq'tzel, kye q'anel tzen tu'n kykayite k'wal.



Kux ten toj tzalb'ajil

Tux ten toj tzalb'ajil kyuk'e k'wal kux tz'exa rinel, chaqil, xpotzil itzen ky'ele yab'il o moqa a b'is tij k'wal.

Kayenk tib'a

Jotx ayi tatb'aj nokxjo b'is tok ttab'l mextzin ex b'ex n-el tzenku oktem yolil tuk'a jin txb'oj.

A Nab'il te Jennifer:

At jun amb'il xten Jennifer toj b'iz, atzin noq b'is ti'j pwaq, noq t-q'o'n yab'il toj tchwinqil ch'uq xmilal a mux txin, tzma te qaq (6) ab'q'e (años), nimx b'isi tij tnane moqa t-txu, kub' tyolin Jennifer te jun tuk'a tzaj tq'man te tu'n tkub' tyolin te jun q'anil, atzin q'anil x-el tnik' tij mextzin b'es saj yolin moqa sajyon tq'amb'il, atzin te Jennifer b'ex sokx tq'o'n tal toj jun ja xnaq'tzal, nim amb'il toj junjen k'loj q'ij, iktzintzjo s-ele yab'il tij Jennifer es ma' txit q'man te tal tu'n tujin ex tu'n tchaqin noq tichaq saqchb'il.





FLORIDA STATE
UNIVERSITY
COLLEGE OF MEDICINE

Contact us:

Website: www.FSUstress.org

Phone: 239-658-3123

Email: FSUstress@med.fsu.edu



www.FSUstress.org

With support from RCMA and the Hispanic Federation Nonprofit Emergency Assistance Fund